



CV0-003^{Q&As}

CompTIA Cloud+

Pass CompTIA CV0-003 Exam with 100% Guarantee

Free Download Real Questions & Answers **PDF** and **VCE** file from:

<https://www.pass4itsure.com/cv0-003.html>

100% Passing Guarantee
100% Money Back Assurance

Following Questions and Answers are all new published by CompTIA
Official Exam Center

- ⚙ **Instant Download** After Purchase
- ⚙ **100% Money Back** Guarantee
- ⚙ **365 Days** Free Update
- ⚙ **800,000+** Satisfied Customers



**QUESTION 1**

A cloud engineer is responsible for managing two cloud environments from different MSPs. The security department would like to inspect all traffic from the two cloud environments.

Which of the following network topology solutions should the cloud engineer implement to reduce long-term maintenance?

- A. Chain
- B. Star
- C. Mesh
- D. Hub and spoke

Correct Answer: D

Hub and spoke is a type of network topology that consists of a central node or device (hub) that connects to multiple peripheral nodes or devices (spokes). Hub and spoke can help reduce long-term maintenance for managing two cloud environments from different MSPs, as it can simplify and centralize the network configuration and management by using the hub as a single point of contact and control for the spokes. Hub and spoke can also improve network performance and security, as it can reduce latency, bandwidth consumption, and network congestion by routing traffic through the hub. References: CompTIA Cloud+ Certification Exam Objectives, page 15, section 2.8

QUESTION 2

A systems administrator recently deployed a VDI solution in a cloud environment; however, users are now experiencing poor rendering performance when trying to display 3-D content on their virtual desktops, especially at peak times.

Which of the following actions will MOST likely solve this issue?

- A. Update the guest graphics drivers from the official repository
- B. Add more vGPU licenses to the host
- C. Instruct users to access virtual workstations only on the VLAN
- D. Select vGPU profiles with higher video RAM

Correct Answer: D

A vGPU profile is a configuration option that defines the amount of video RAM (vRAM) and other resources that are allocated to a virtual machine (VM) that uses a virtual graphics processing unit (vGPU). A vGPU profile can affect the rendering performance of a VM, as it determines how much graphics memory and processing power are available for displaying complex graphics content. Selecting vGPU profiles with higher video RAM can most likely solve the issue of poor rendering performance when trying to display 3-D content on virtual desktops, especially at peak times, as it can provide more graphics resources and improve the quality and speed of rendering. References: CompTIA Cloud+ Certification Exam Objectives, page 11, section 1.6

Reference: <https://www.cisco.com/c/dam/en/us/solutions/collateral/data-center-virtualization/desktop-virtualization-solutions-vmware-horizon-view/whitepaper-c11-741606.pdf>

**QUESTION 3**

An organization's executives would like to allow access to devices that meet the corporate security compliance levels. Which of the following criteria are most important for the organization to consider? (Select two).

- A. Serial number
- B. Firmware
- C. Antivirus version and definition
- D. OS patch level
- E. CPU architecture
- F. Manufacturer

Correct Answer: CD

Explanation: Antivirus version and definition and OS patch level are important criteria for the organization to consider when allowing access to devices that meet the corporate security compliance levels. These criteria can help ensure that the devices are protected from malware and vulnerabilities that could compromise the security of the organization's data and systems. Serial number, firmware, CPU architecture, and manufacturer are not directly related to security compliance levels, although they may be relevant for other purposes such as inventory management or compatibility.

References: CompTIA Cloud+ CV0-003 Exam Objectives, Objective 4.2: Given a scenario, apply security configurations and compliance controls¹ ; CompTIA Quick Start Guide to Tackling Cloud Security Concerns²

QUESTION 4

A systems administrator needs to connect the company's network to a public cloud services provider. Which of the following will BEST ensure encryption in transit for data transfers?

- A. Identity federation
- B. A VPN tunnel
- C. A proxy solution
- D. A web application firewall

Correct Answer: B

Explanation: The answer is A. SAML. SAML (Security Assertion Markup Language) is a standard for exchanging authentication and authorization data between different parties, such as a user and a service provider. In a federated cluster,

SAML can be used to enable single sign-on (SSO) for users across multiple clusters or cloud providers. SAML relies on the exchange of XML-based assertions that contain information about the user's identity, attributes, and entitlements. If

the user's API access tokens have become invalid, it could be because the SAML assertions have expired, been revoked, or corrupted. The administrator should check the SAML configuration and logs to determine the cause of this issue.



Some possible sources of information about SAML and federated clusters are:

Authenticating | Kubernetes: This page provides an overview of authenticating users in Kubernetes, including using SAML for federated identity. Authenticating to the Kubernetes API server - Google Cloud: This page explains how to

authenticate to the Kubernetes API server on Google Cloud, including using SAML for federated identity with Google Cloud Identity Platform. Error 403 User not authorized when trying to access Azure Databricks API through Active Directory

- Stack Overflow: This page discusses a similar issue of users getting an error when trying to access Azure Databricks API using SAML and Active Directory.

QUESTION 5

CORRECT TEXT A company has decided to scale its e-commerce application from its corporate datacenter to a commercial cloud provider to meet an anticipated increase in demand during an upcoming holiday. The majority of the application load takes place on the application server under normal conditions. For this reason, the company decides to deploy additional application servers into a commercial cloud provider using the on-premises

orchestration engine that installs and configures common software and network configurations.

The remote computing environment is connected to the on-premises datacenter via a site-to-site IPSec tunnel. The external DNS provider has been configured to use weighted round-robin routing to load balance connections from the Internet.

During testing, the company discovers that only 20% of connections completed successfully.

INSTRUCTIONS

Review the network architecture and supporting documents and fulfill these requirements:

Part 1:

1.

Analyze the configuration of the following components: DNS, Firewall 1, Firewall 2, Router 1, Router 2, VPN and Orchestrator Server.

2.

Identify the problematic device(s).

Part 2:

1.

Identify the correct options to provide adequate configuration for hybrid cloud architecture.

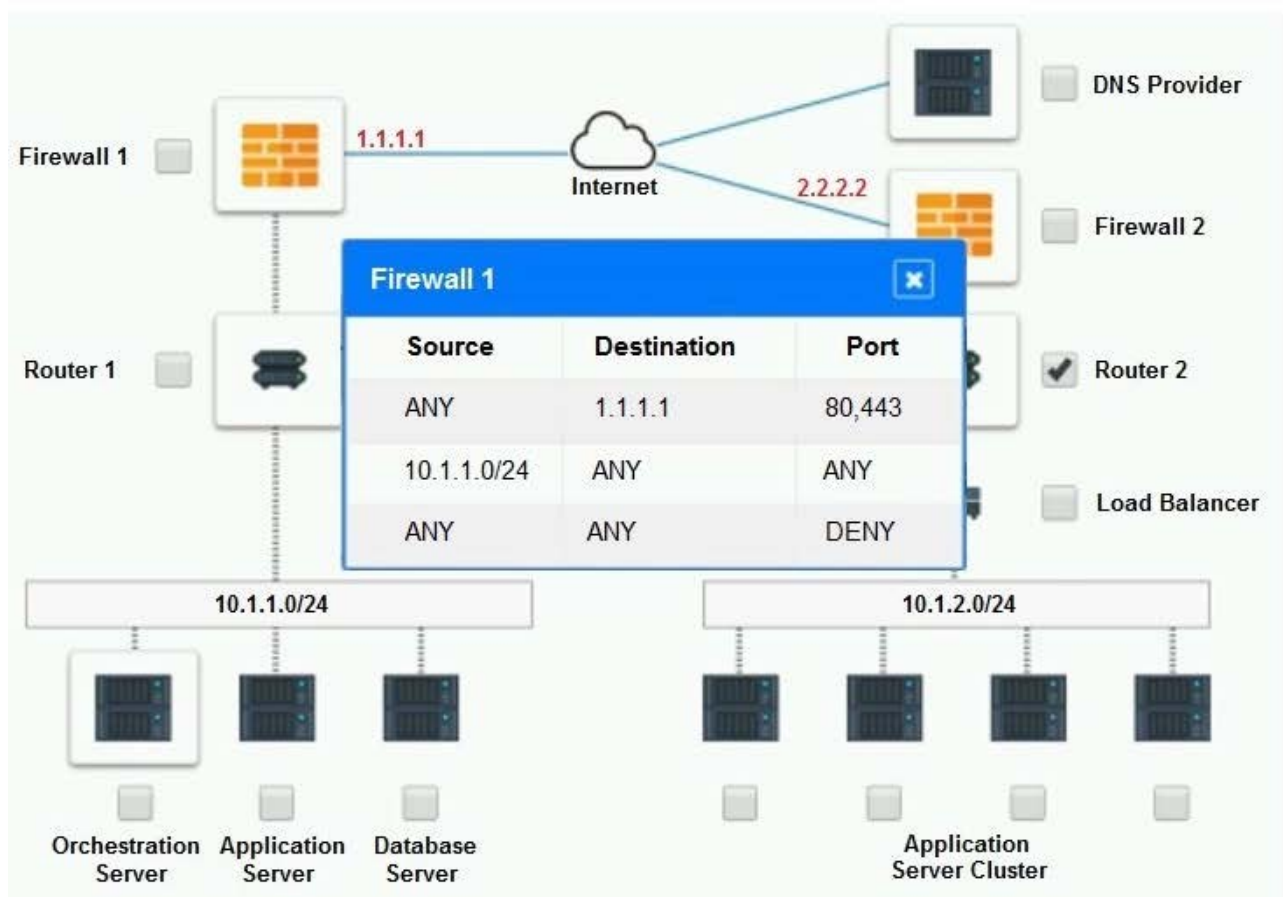
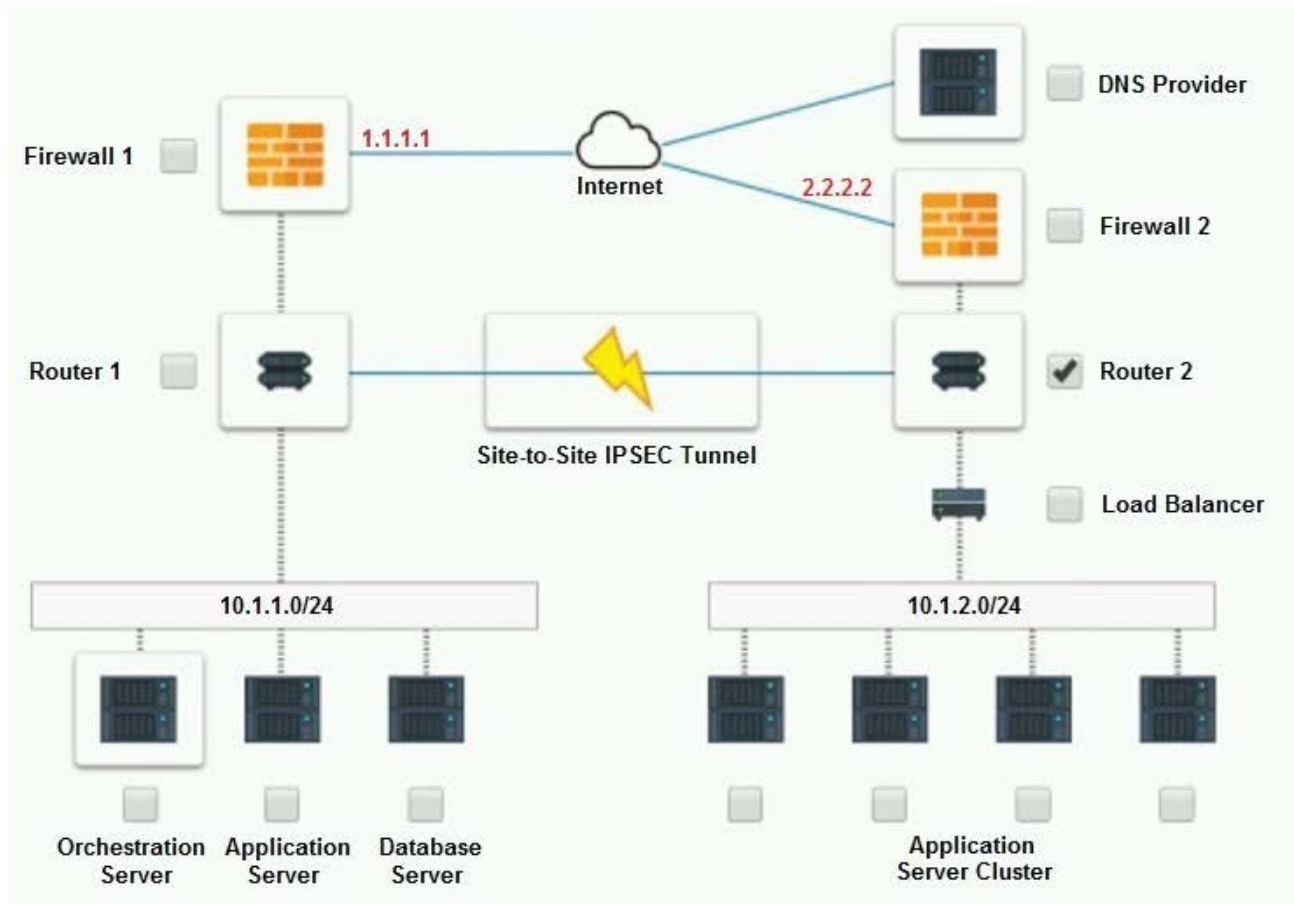
2.

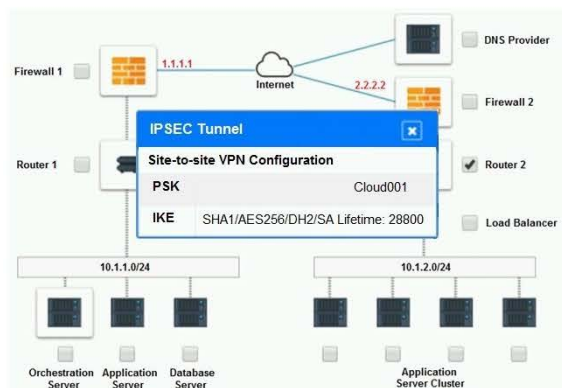
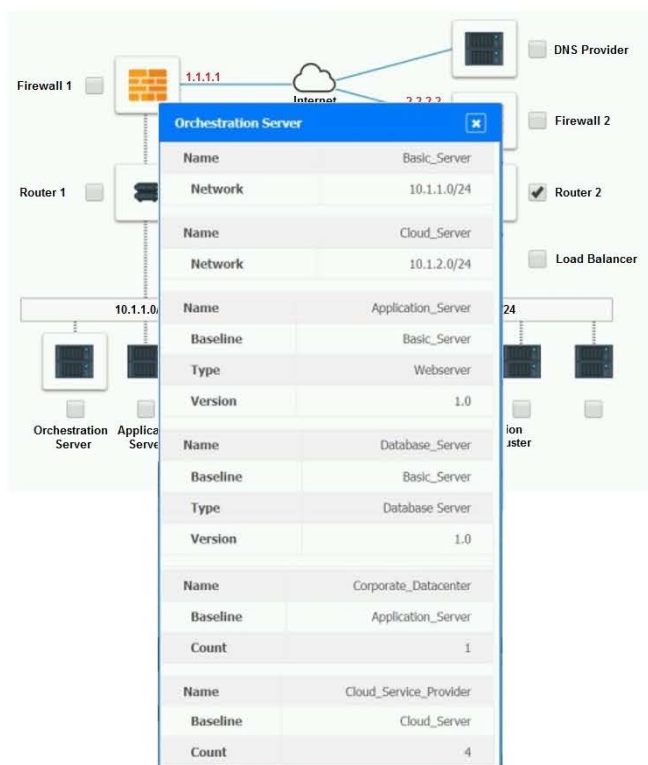
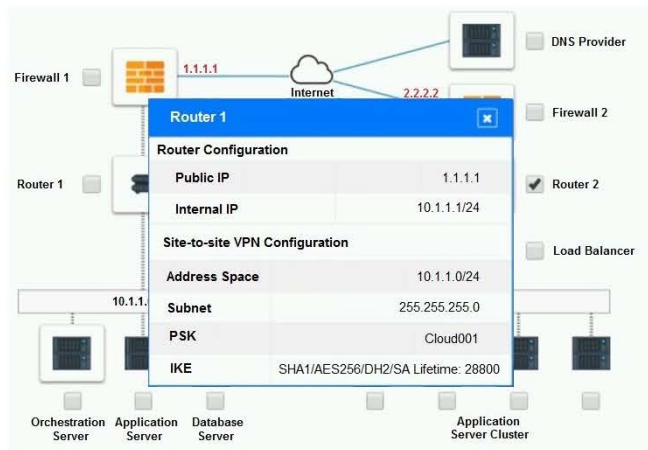
If at any time you would like to bring back the initial state of the simulation, please click the Reset All button.

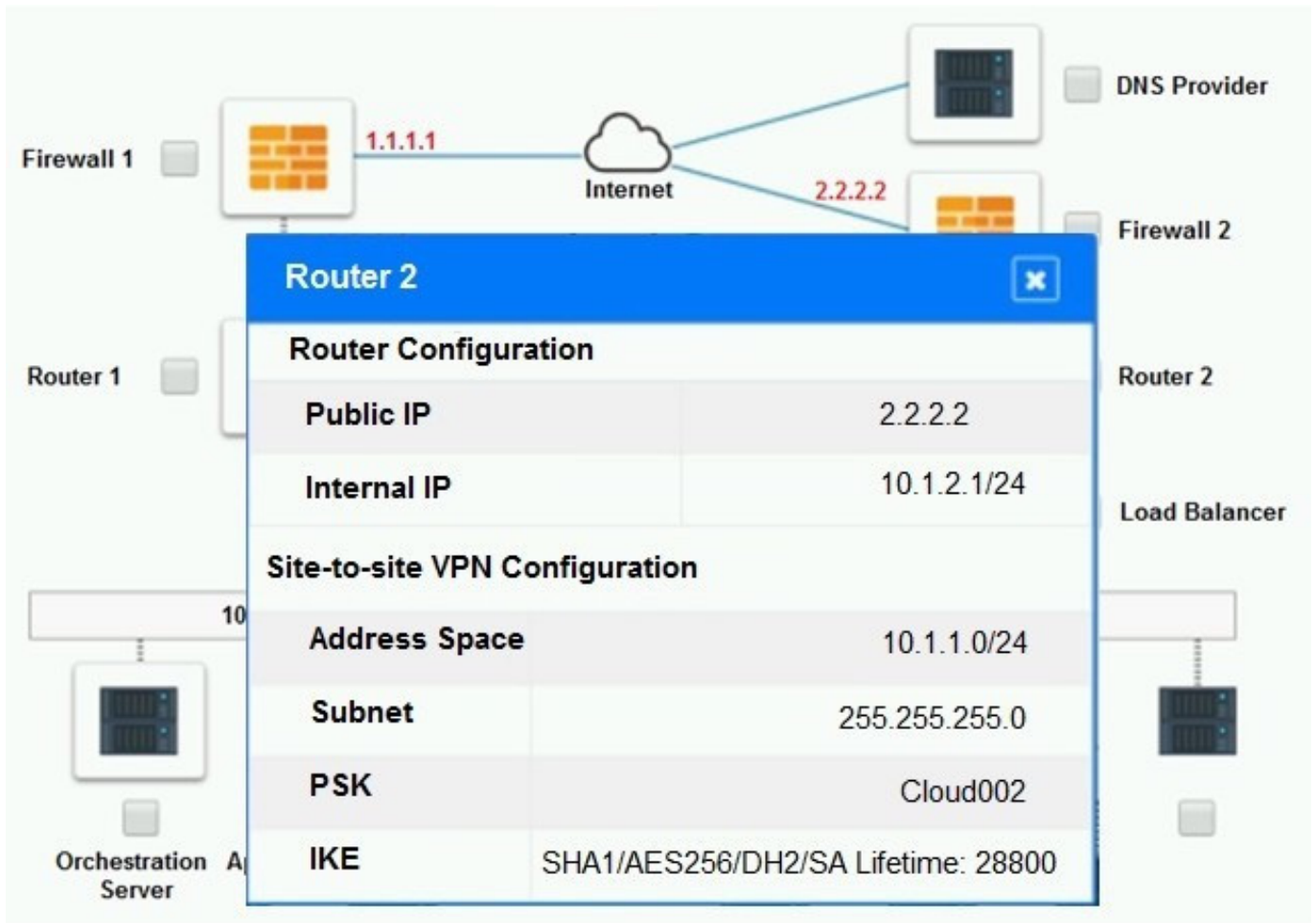
Part 1:

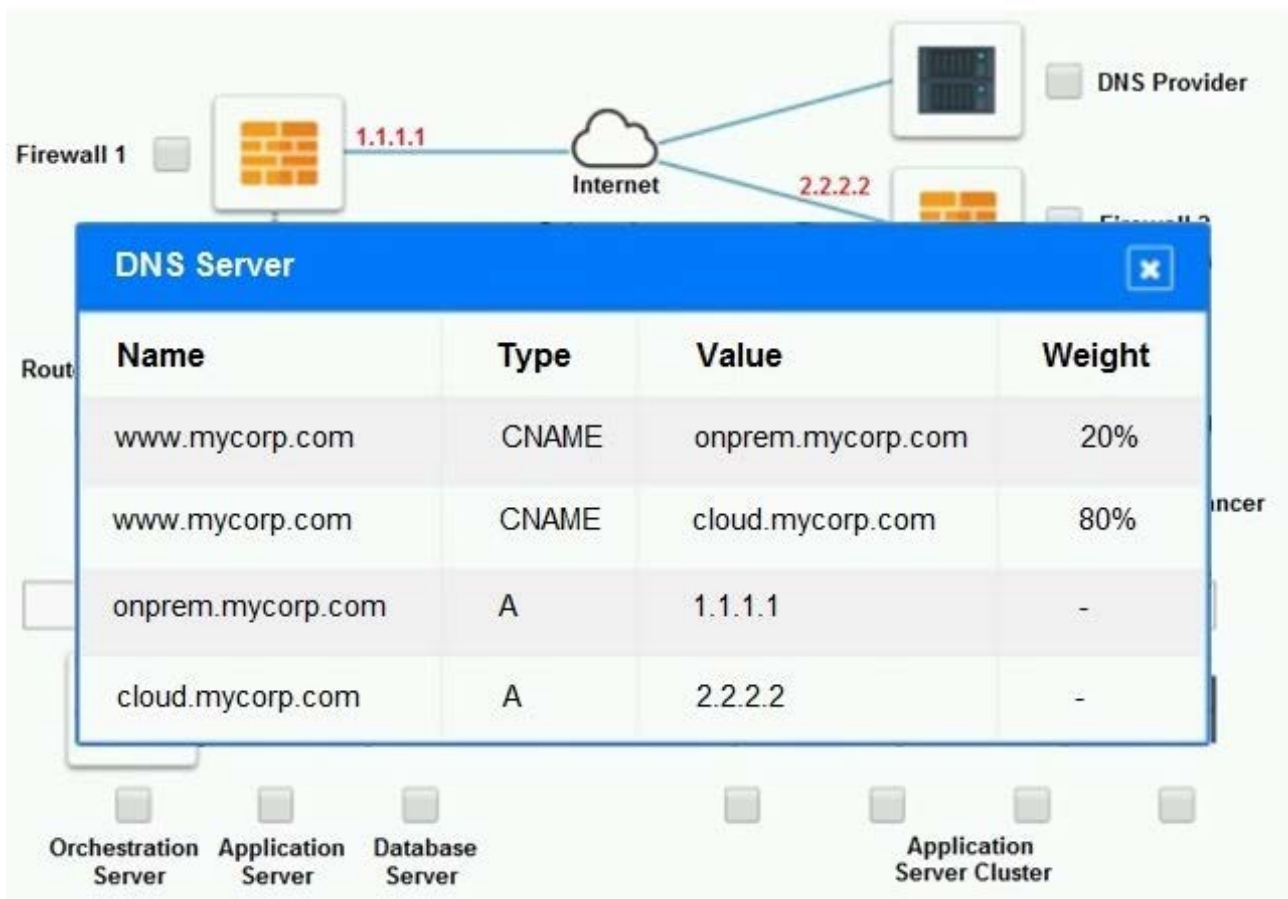
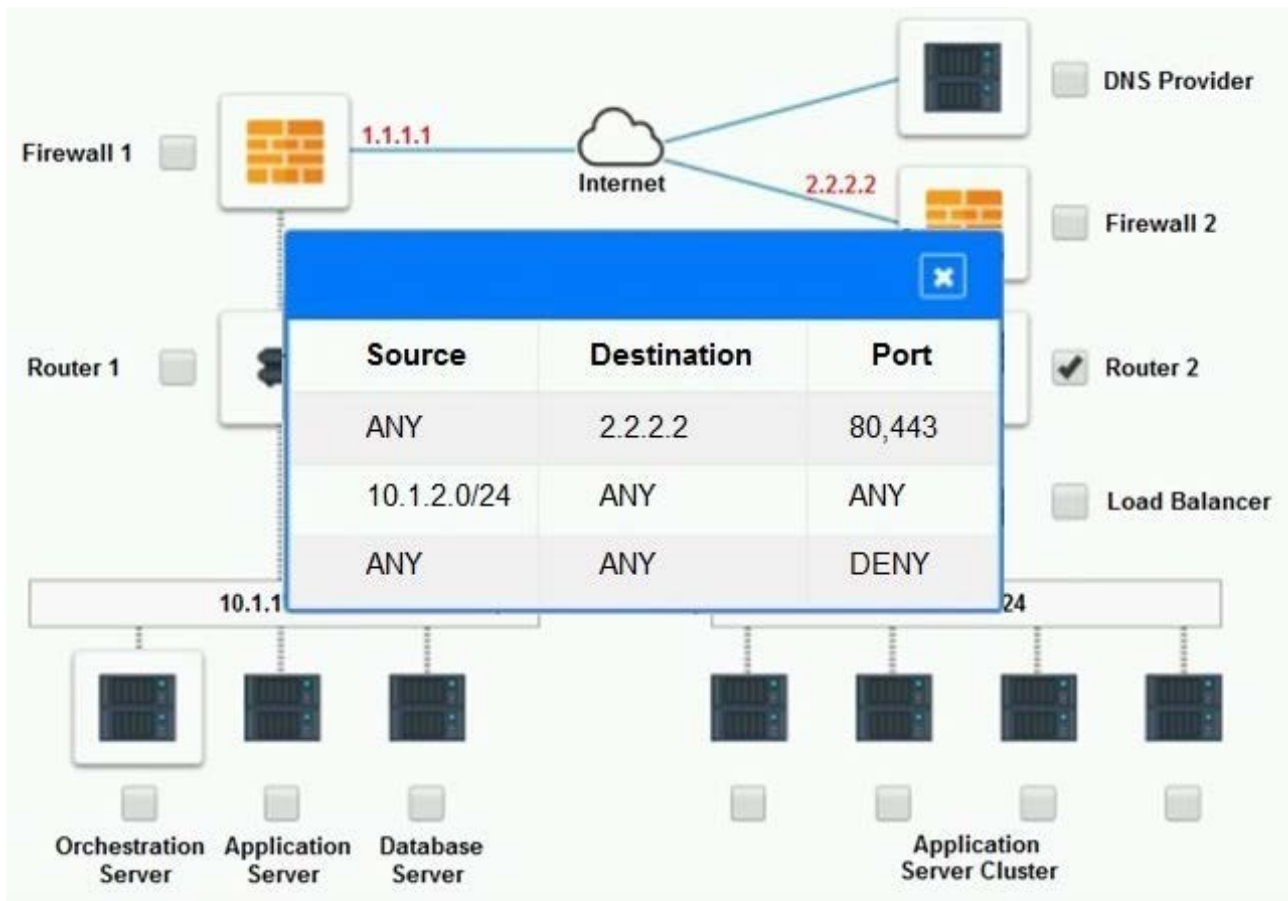


Cloud Hybrid Network Diagram











Part 2:

Only select a maximum of TWO options from the multiple choice question

- A. Update the PSK (Pre-shared key) in Router 2.
- B. Update the A record on the DNS from 2.2.2.2 to 1.1.1.1.
- C. Promote deny All to allow All in Firewall 1 and Firewall 2.
- D. Change the Address Space on Router 2.
- E. Change internal IP Address of Router 1.
- F. Reverse the Weight property in the two CNAME records on the DNS.
- G. Add the Application Server at on-premises to the Load Balancer.

Correct Answer: AD

QUESTION 6

A cloud engineer recently set up a container image repository. The engineer wants to ensure that downloaded images are not modified in transit. Which of the following is the best method to achieve this goal?

- A. SHA-256
- B. IPSec
- C. AES-256
- D. MD5
- E. serpent-256

Correct Answer: A

SHA-256 is the best method to ensure that downloaded images are not modified in transit. SHA-256 is a type of cryptographic hash function that can generate a unique and fixed-length digest for any input data. The digest can be used to verify the integrity and authenticity of the data, as any modification or tampering of the data would result in a different digest. SHA-256 is more secure and reliable than MD5, which is an older and weaker hash function that has been proven to be vulnerable to collisions and attacks¹². AES-256 and serpent-256 are types of encryption algorithms, not hash functions, and they are used to protect the confidentiality of the data, not the integrity. IPSec is a network security protocol that can use encryption and hashing to secure data in transit, but it is not a method by itself

QUESTION 7

A VDI administrator is enhancing the existing environment with a feature to allow users to connect devices to virtual workstations. Which of the following types of devices are most likely to be allowed in the upgrade? (Select two).

- A. Display monitors



- B. USB devices
- C. SATA devices
- D. PCIe devices
- E. PCI devices
- F. Printers

Correct Answer: BF

Explanation: B. USB devices and F. Printers are most likely to be allowed in the upgrade. USB devices are common peripherals that users may want to connect to their virtual workstations, such as flash drives, keyboards, mice, webcams, etc. Printers are also useful devices that users may need to print documents from their virtual desktops. VDI software can support USB redirection and printer redirection to enable these devices to work with virtual workstations¹². Display monitors, SATA devices, PCIe devices, and PCI devices are less likely to be allowed in the upgrade, as they are either part of the physical hardware of the end device or the server, or they require direct access to the host system. VDI software typically does not support these types of devices, as they are not compatible with the virtualization layer or the remote display protocol³⁴.

1: What is VDI? | Virtual Desktop Infrastructure | VMware 2: What Is Virtual Desktop Infrastructure (VDI)? | Microsoft Azure 3: What Is Virtual Desktop Infrastructure (VDI)? - Cisco 4: Best Virtual Desktop Infrastructure (VDI) Software in 2023 | G2

QUESTION 8

A DevOps administrator is designing a new machine-learning platform. The application needs to be portable between public and private clouds and should be kept as small as possible. Which of the following approaches would BEST meet these requirements?

- A. Virtual machines
- B. Software as a service
- C. Serverless computing
- D. Containers

Correct Answer: D

Containers are the best approach to design a new machine-learning platform that needs to be portable between public and private clouds and should be kept as small as possible. Containers are isolated environments that can run applications and their dependencies without interfering with other processes or systems. Containers are lightweight, portable, and scalable, which makes them ideal for machine-learning applications. Containers can be moved easily between public and private clouds without requiring any changes or modifications. Containers can also reduce the size and complexity of applications by using only the necessary components and libraries.

Reference: <https://www.ibm.com/in-en/cloud/learn/containerization>

QUESTION 9

A cloud administrator needs to reduce storage costs. Which of the following would best help the administrator reach that



goal?

- A. Enabling compression
- B. Implementing deduplication
- C. Using containers
- D. Rightsizing the VMs

Correct Answer: B

Explanation: Deduplication is a process by which redundant data is eliminated, thus reducing the size of the dataset. Deduplication with cloud storage reduces the storage requirements, along with the amount of data to be transferred over the network, resulting in faster and more efficient data protection operations¹. Deduplication can help to shrink the data footprint, lower the storage costs, and improve the performance of backup and recovery processes². Deduplication can be applied at different levels, such as file-level, block-level, or byte-level, depending on the granularity and efficiency of the technique³. Deduplication can also be performed at different locations, such as source, target, or cloud, depending on the architecture and design of the storage system³. By implementing deduplication, a cloud administrator can achieve significant data savings and optimize the cloud storage costs⁴. References: Data deduplication techniques for efficient cloud storage management: a systematic review; How Data Deduplication Reduces Cloud Data Costs; How Data Deduplication Can Save Cloud Storage Costs?; Data Deduplication Overview; What is Data Deduplication and How Can it Help Reduce Cloud Costs?.

QUESTION 10

CORRECT TEXT

The QA team is testing a newly implemented clinical trial management (CTM) SaaS application that uses a business intelligence application for reporting. The UAT users were instructed to use HTTP and HTTPS.

Refer to the application dataflow:

- 1A -The end user accesses the application through a web browser to enter and view clinical data.
- 2A -The CTM application server reads/writes data to/from the database server.
- 1B -The end user accesses the application through a web browser to run reports on clinical data.
- 2B -The CTM application server makes a SOAP call on a non-privileged port to the BI application server.
- 3B -The BI application server gets the data from the database server and presents it to the CTM application server.

When UAT users try to access the application using <https://ctm.app.com> or <http://ctm.app.com>, they get a message stating: "Browser cannot display the webpage." The QA team has raised a ticket to troubleshoot the issue.

INSTRUCTIONS

You are a cloud engineer who is tasked with reviewing the firewall rules as well as virtual network settings.

You should ensure the firewall rules are allowing only the traffic based on the dataflow.

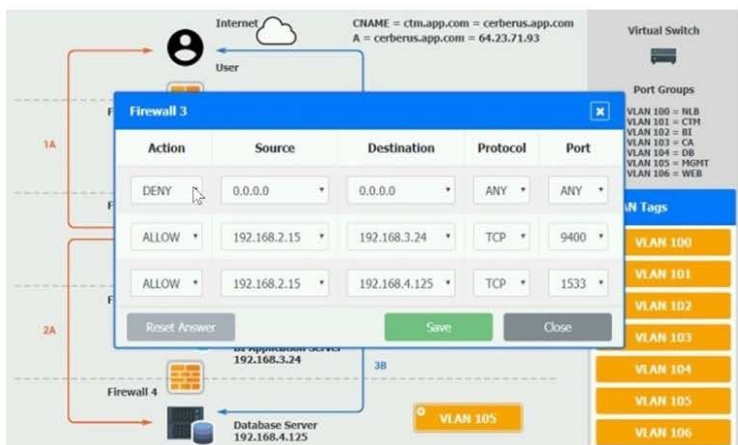
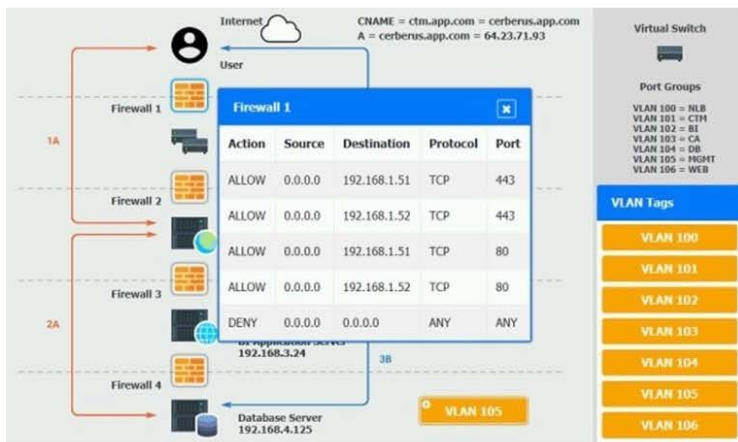
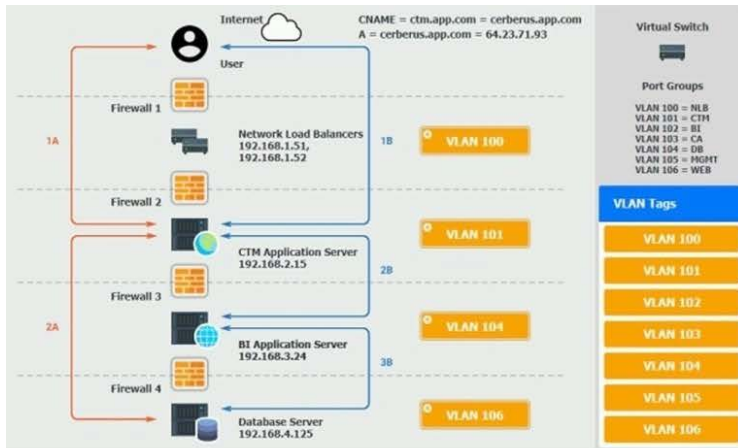
You have already verified the external DNS resolution and NAT are working.

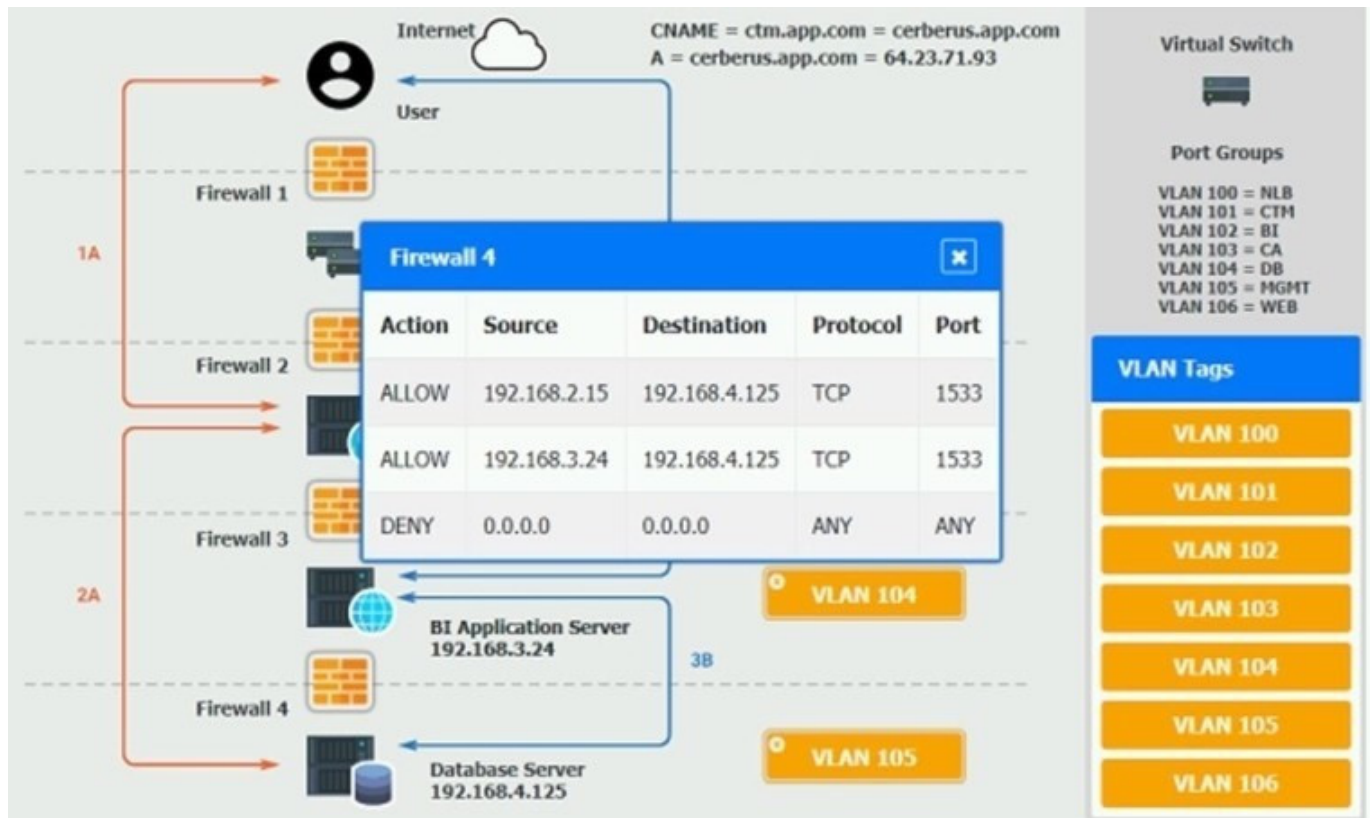
Verify and appropriately configure the VLAN assignments and ACLs. Drag and drop the appropriate VLANs to each tier



from the VLAN Tags table. Click on each Firewall to change ACLs as needed.

If at any time you would like to bring back the initial state of the simulation, please click the Reset All button.





A. Check the answer in explanation.

Correct Answer: A

On firewall 3, change the DENY 0.0.0.0 entry to rule 3 not rule 1.

QUESTION 11

An IaaS application has a two-hour RTO and a four-hour RPO. The application takes one hour to back up its data or restore from a local backup file. A systems administrator is tasked with configuring the backup policy.

Which of the following should the administrator configure to achieve the application requirements with the LEAST cost?

- A. Back up to long-term storage every night
- B. Back up to object storage every three hours
- C. Back up to long-term storage every four hours
- D. Back up to object storage every hour

Correct Answer: B

Object storage is a type of storage service that stores data as objects with unique identifiers and metadata in a flat namespace or structure. Backing up to object storage every three hours can help achieve the application requirements with the least cost for an IaaS application that has a two-hour RTO and a four-hour RPO, as it can provide scalable, durable, and cost-effective storage for backup data while meeting the recovery time and point objectives. Backing up to object storage every three hours can ensure that the backup data is no more than four hours old and can be restored



within two hours in case of a disaster or failure. References: CompTIA Cloud+ Certification Exam Objectives, page 9, section 1.4

QUESTION 12

A systems administrator is reviewing the logs from a company's IDS and notices a large amount of outgoing traffic from a particular server. The administrator then runs a scan on the server, which detects malware that cannot be removed. Which of the following should the administrator do first?

- A. Determine the root cause.
- B. Disconnect the server from the network.
- C. Perform a more intrusive scan.
- D. Restore the server from a backup.

Correct Answer: B

Explanation: The first step in any incident response procedure is to contain the incident and prevent it from spreading or causing more damage. In this scenario, the systems administrator is reviewing the logs from a company's IDS and notices a large amount of outgoing traffic from a particular server. The administrator then runs a scan on the server, which detects malware that cannot be removed. This indicates that the server is compromised and may be sending malicious or sensitive data to an external source. Therefore, the best thing to do first is to disconnect the server from the network, which will isolate it from the rest of the system and stop the data exfiltration. Determining the root cause, performing a more intrusive scan, and restoring the server from a backup are all important steps, but they should be done after the server is disconnected from the network. References: CompTIA Cloud+ CV0-003 Certification Study Guide, Chapter 10, Incident Response Procedures, page 1771.

QUESTION 13

A cloud administrator created four VLANs to autoscale the container environment. Two of the VLANs are on premises, while two VLANs are on a public cloud provider with a direct link between them. Firewalls are between the links with an additional subnet for communication, which is 192.168.5.0/24.

The on-premises gateways are:

192.168.1.1/24 192.168.2.1/24

The cloud gateways are:

192.168.3.1/24 192.168.4.1/24

The orchestrator is unable to communicate with the cloud subnets. Which Of the following should the administrator do to resolve the issue?

- A. Allow firewall traffic to 192.168.5.0/24.
- B. Set both firewall interfaces to 192.168.5.1/24.
- C. Add interface 192.168.3.1/24 on the local firewall.
- D. Add interface 192.168.1.1/24 on the cloud firewall.



Correct Answer: A

Explanation: To allow communication between the on-premises and cloud subnets, the firewall traffic should be allowed to pass through the additional subnet for communication, which is 192.168.5.0/24. This subnet acts as a bridge between the two networks and should have firewall rules that permit traffic from and to both sides. References: [CompTIA Cloud+ Study Guide], page 181.

QUESTION 14

A technician is working with an American company that is using cloud services to provide video-based training for its customers. Recently, due to a surge in demand, customers in Europe are experiencing latency.

Which of the following services should the technician deploy to eliminate the latency issue?

- A. Auto-scaling
- B. Cloud bursting
- C. A content delivery network
- D. A new cloud provider

Correct Answer: C

<https://www.cloudflare.com/learning/cdn/what-is-a-cdn/> "A content delivery network (CDN) refers to a geographically distributed group of servers which work together to provide fast delivery of Internet content."

QUESTION 15

A system administrator supports an application in the cloud, which includes a restful API that receives an encrypted message that is passed to a calculator system. The administrator needs to ensure the proper function of the API using a new automation tool. Which of the following techniques would be BEST for the administrator to use to accomplish this requirement?

- A. Functional testing
- B. Performance testing
- C. Integration testing
- D. Unit testing

Correct Answer: A

Functional testing is a testing technique that involves testing the functionality of an application to ensure that it performs the intended tasks correctly. In this case, the API is expected to receive an encrypted message and pass it to a calculator system, so functional testing can help ensure that the API is working properly and is passing the message correctly to the calculator system. Other types of testing, such as performance testing, integration testing, and unit testing, may also be useful in some contexts, but functional testing is the most appropriate option for ensuring that the API is functioning properly.

Reference: <https://www.softwaretestinghelp.com/the-difference-between-unit-integration- and-functional-testing/>



VCE & PDF

Pass4itSure.com

<https://www.pass4itsure.com/cv0-003.html>

2025 Latest pass4itsure CV0-003 PDF and VCE dumps Download

[CV0-003 VCE Dumps](#)

[CV0-003 Study Guide](#)

[CV0-003 Braindumps](#)